

## ILLUSTRATIONS \*

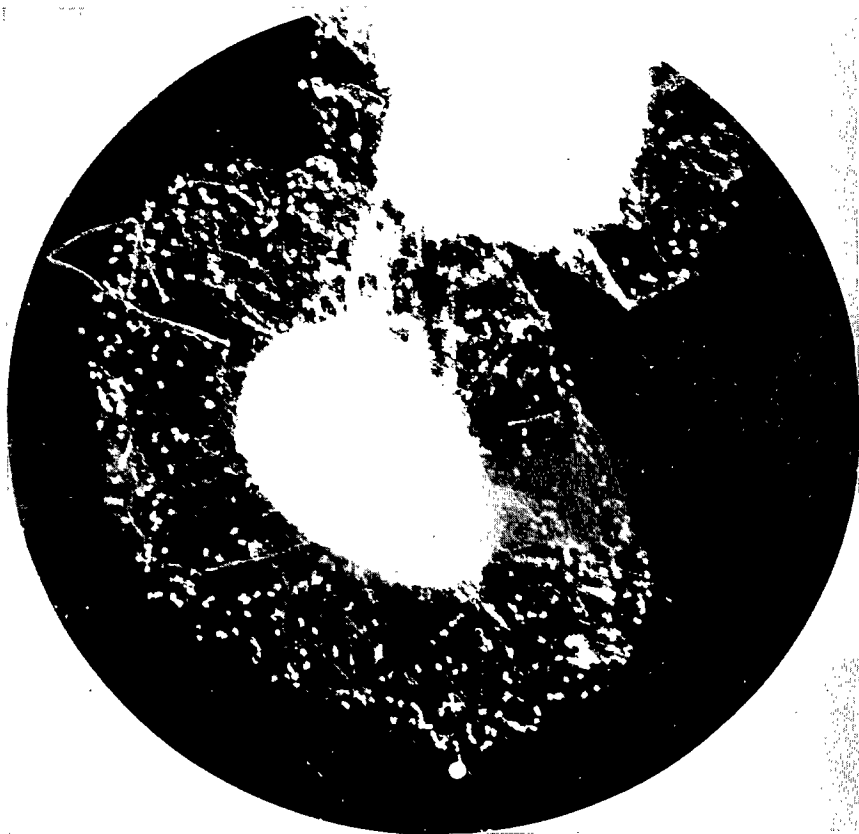
\* The illustrations were kindly provided by the Statens Seruminstitut, Copenhagen (fig. 1), the World Influenza Centre, London (fig. 2 and 3), and the Institut Pasteur, Paris (fig. 4-21). Of the latter, fig. 4 is from a cliché prepared by the Virus Section for a paper, as yet unpublished, by Dr. J. Vieuchange and Dr. J. Giuntini; fig. 5 and 6 are from clichés prepared by the Influenza Laboratory; and fig. 11-21 are reproduced by courtesy of Dr. B. Fauconnier of this institute.

**FIG. 1. VIRUS A (DAN/1/50) - ELEMENTARY BODIES AND FILAMENTS**  
Adsorption onto fowl red-cell ghost



Palladium-shadowed

**FIG. 2. VIRUS A (ENG/1/51) - ELEMENTARY BODIES AND FILAMENTS**  
Adsorption onto fowl red-cell ghost



**FIG. 3. VIRUS B (LEE) - ELEMENTARY BODIES**  
Adsorption onto fowl red-cell ghost

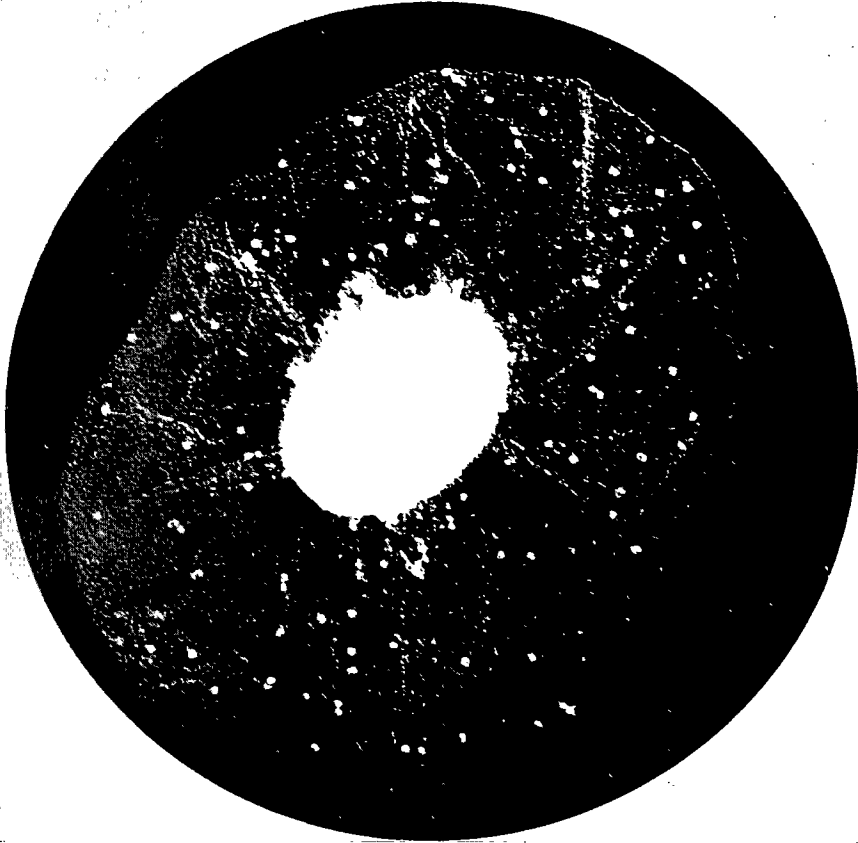
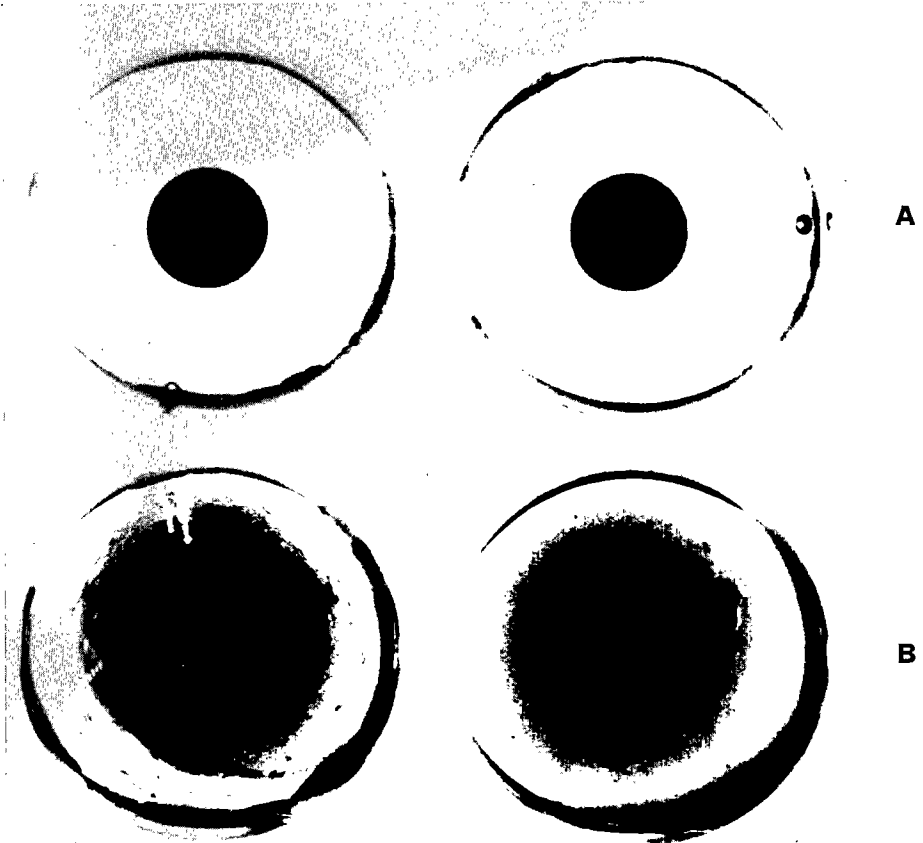


FIG. 4. VIRUS A (PR8) ADSORBED ONTO FOWL RED-CELL GHOST



**FIG. 5. HAEMAGGLUTINATION BY SPECIFIC SERA**



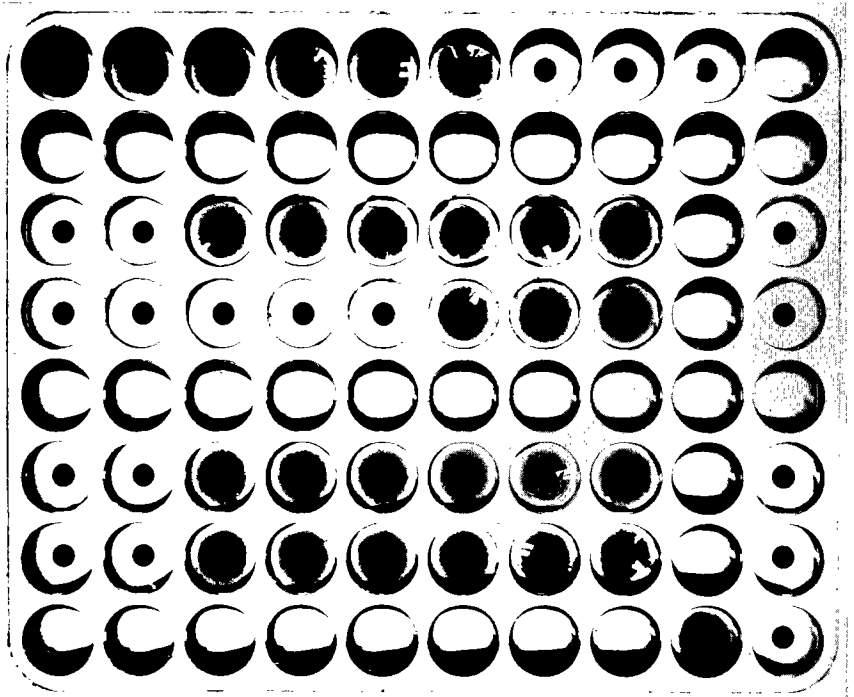
A — Negative ; natural sedimentation of red cells in the centre of the bottom of the tube

B — Positive ; agglutination of red cells covering the bottom of the tube

As seen in a mirror inclined at 45°

**FIG. 6. HAEMAGGLUTINATION BY SPECIFIC SERA**

Series of reactions on a plastic plate



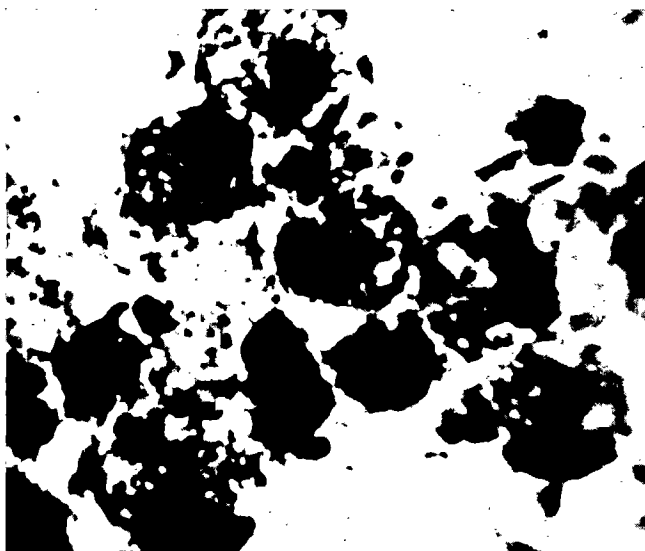
**FIG. 7. TRACHEAL WASHING FROM MOUSE — I**  
24 hours after inoculation - normal cells



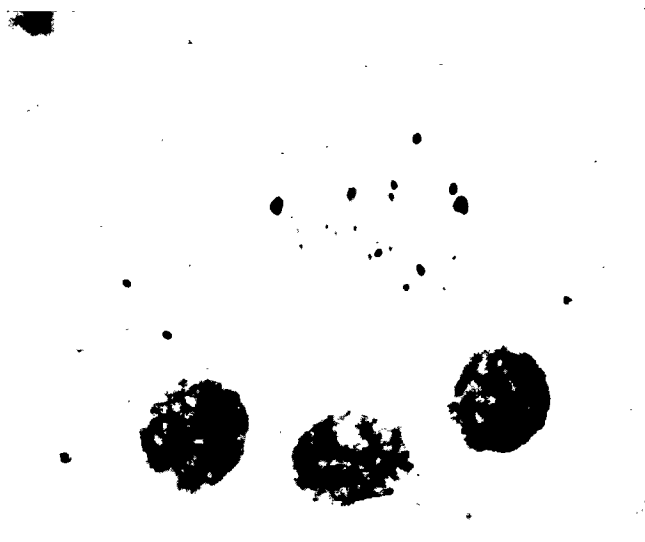
**FIG. 8. TRACHEAL WASHING FROM MOUSE — II**  
48 hours after inoculation - infected cells



**FIG. 9. TRACHEAL WASHING FROM MOUSE — III**  
72 hours after inoculation - intracellular bodies



**FIG. 10. TRACHEAL WASHING FROM MOUSE — IV**  
Four days after inoculation - ruptured cell

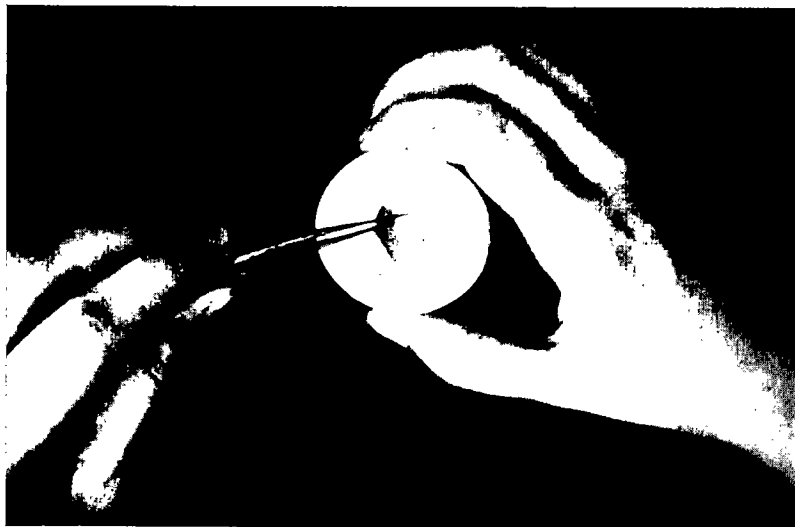


**FIG. 11. TRACHEAL LAVAGE OF MOUSE**

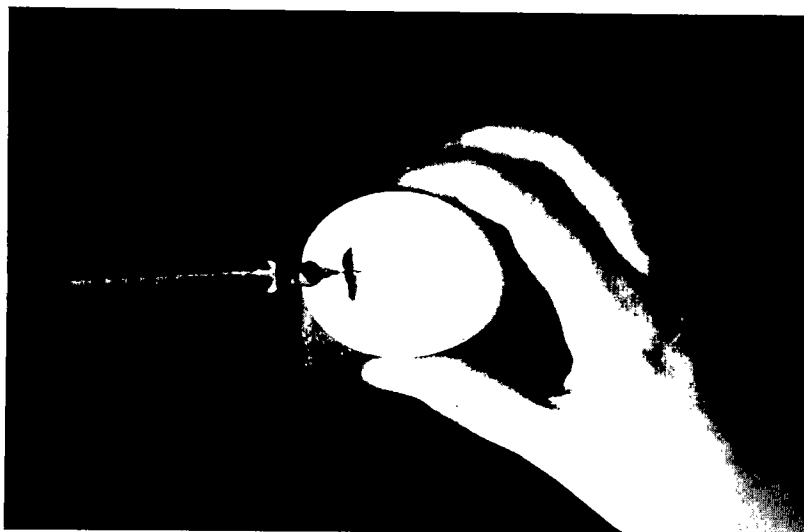


Technique of R. Panthier, G. Cateigne and C. Hannoun

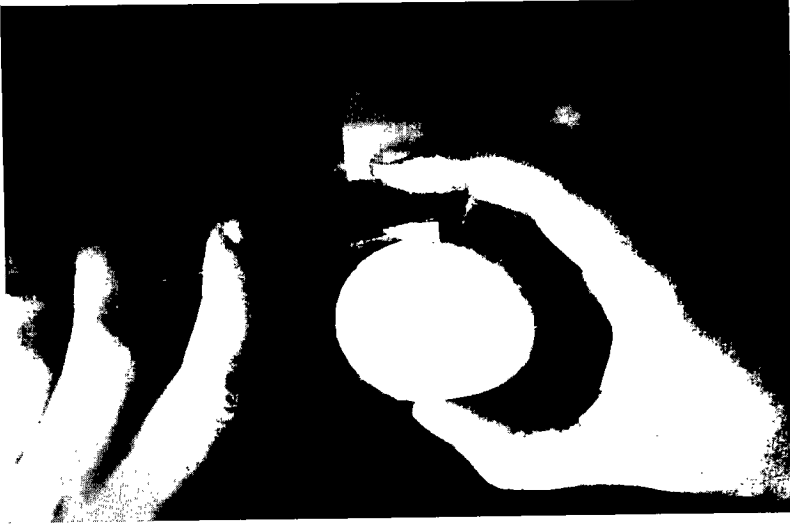
**FIG. 12. INOCULATION OF AMNIOTIC SAC — I**  
Opening of shell



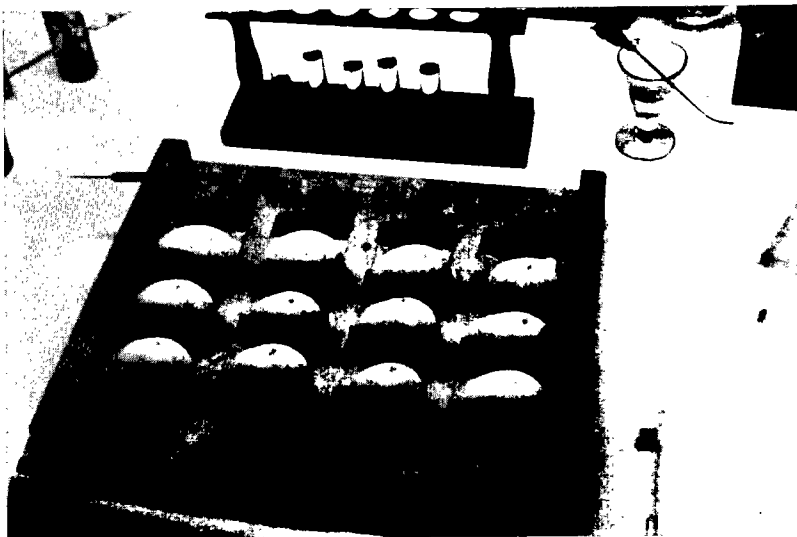
**FIG. 13. INOCULATION OF AMNIOTIC SAC — II**  
Introduction of virus



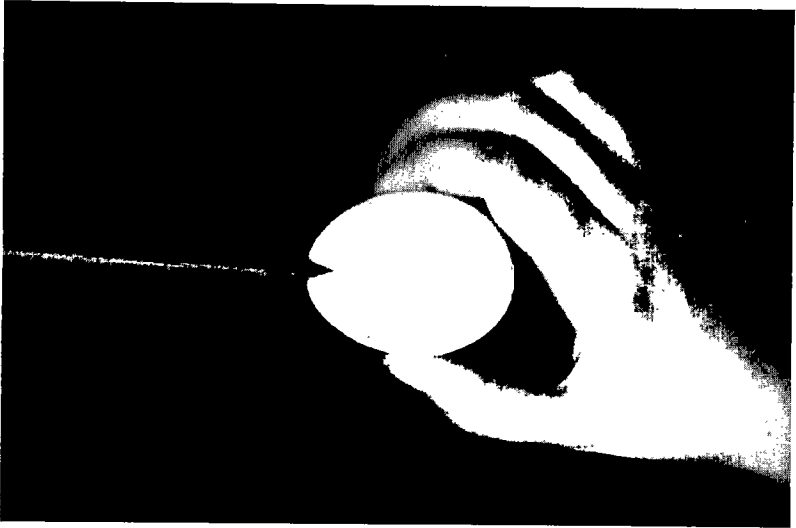
**FIG. 14. INOCULATION OF AMNIOTIC SAC — III**  
Sealing with sterile cellophane tape



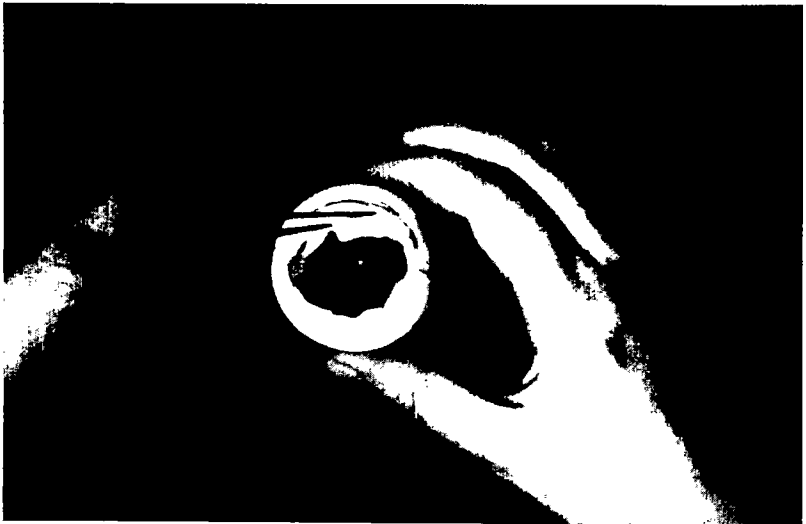
**FIG. 15. TRAY OF EGGS READY FOR ALLANTOIC INOCULATION**



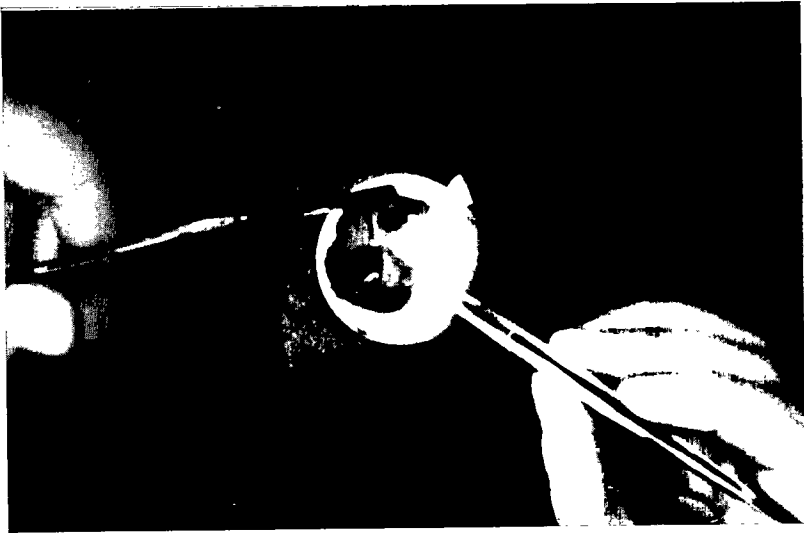
**FIG. 16. INOCULATION IN ALLANTOIC CAVITY**



**FIG. 17. WITHDRAWAL OF ALLANTOIC FLUID — I**  
Opening of air sac



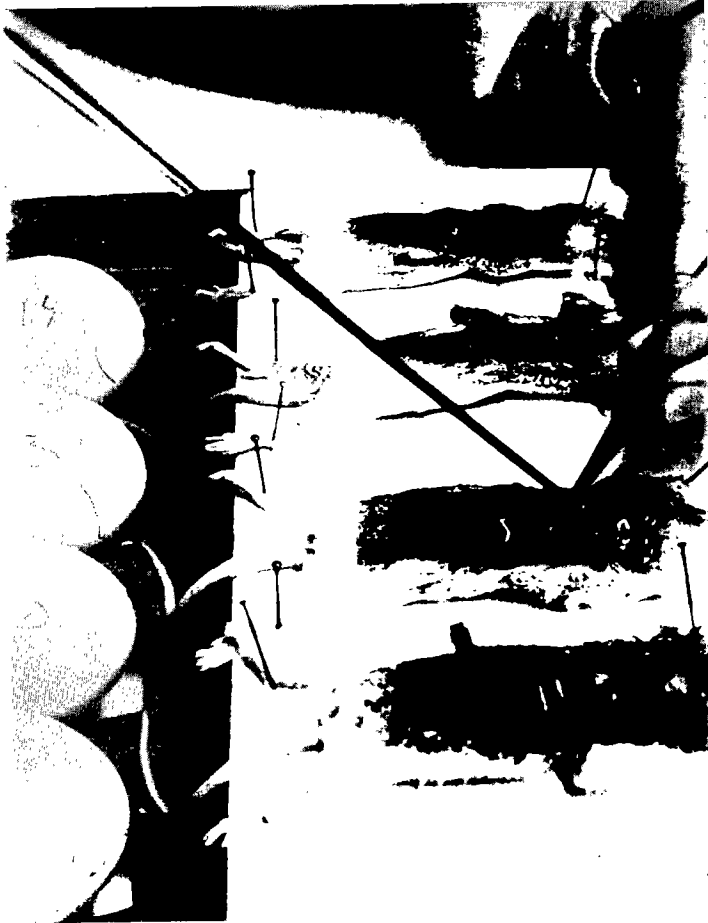
**FIG. 18. WITHDRAWAL OF ALLANTOIC FLUID — II**  
Excision of chorio-allantoic membrane



**FIG. 19. WITHDRAWAL OF ALLANTOIC FLUID — III**  
Aspiration



**FIG. 20. INOCULATION OF EMBRYONATED EGG WITH MOUSE BLOOD — I**  
Puncture of mouse heart



Technique of B. Fauconnier

**FIG. 21. INOCULATION OF EMBRYONATED EGG WITH MOUSE BLOOD — II**  
Immediate inoculation of egg



Technique of B. Fauconnier